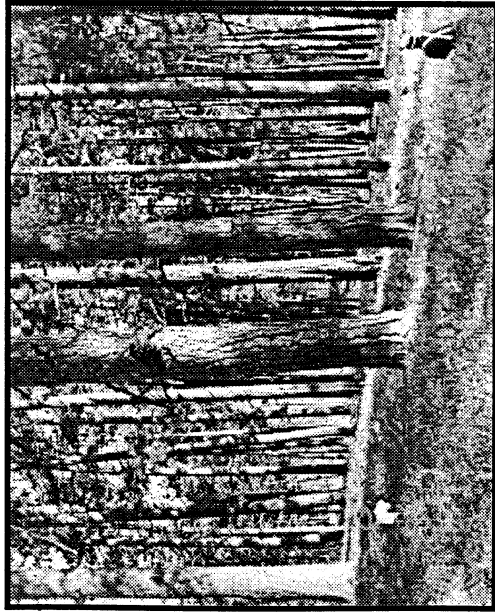


THE USFS PONDEROSA POSTER CHILD

Text, Lies, and Photographs

The U. S. Forest Service omits from thousands of posters and reports its photo on the left, which shows the pre-logging conditions of the Bitterroot's Lick Creek forest in 1909.

It then claims its 1909 photo in the center "serves as the baseline reference of forest stand conditions that evolved from regularly occurring, low-intensity surface burning," even though it actually shows "cleanup operations on the Lick Creek timber sale."



It then includes its 1997 photo on the right to show how well recent "ecosystem management treatments" compare to "pre-settlement" conditions. Obviously, logging to open the canopy is necessary only to mimic the logging done in 1909, not to restore these forests to their pre-settlement conditions.

Restoring forests to pre-settlement conditions requires removing the roads, not the trees!