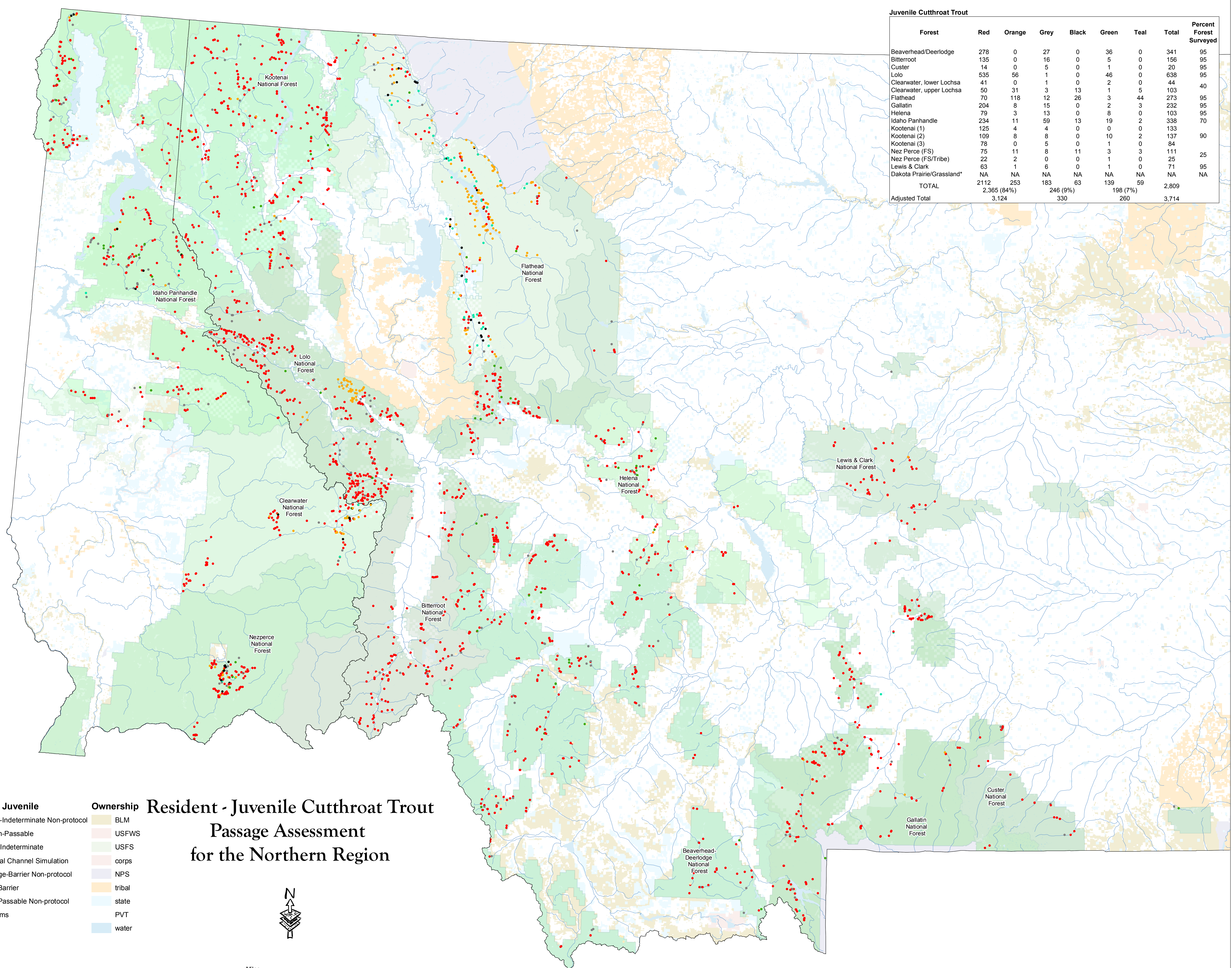


Juvenile Cutthroat Trout								
Forest	Red	Orange	Grey	Black	Green	Teal	Total	Percent Forest Surveyed
Beaverhead/Deerlodge	278	0	27	0	36	0	341	95
Bitterroot	135	0	16	0	5	0	156	95
Custer	14	0	5	0	1	0	20	95
Lolo	535	56	1	0	46	0	638	95
Clearwater, lower Lochsa	41	0	1	0	2	0	44	40
Clearwater, upper Lochsa	50	31	3	13	1	5	103	95
Flathead	70	118	12	26	3	44	273	95
Gallatin	204	8	15	0	2	3	232	95
Helena	79	3	13	0	8	0	103	95
Idaho Panhandle	234	11	59	13	19	2	338	70
Kootenai (1)	125	4	4	0	0	0	133	90
Kootenai (2)	109	8	8	0	10	2	137	90
Kootenai (3)	78	0	5	0	1	0	84	90
Nez Perce (FS)	75	11	8	11	3	3	111	25
Nez Perce (FS/Tribe)	22	2	0	0	1	0	25	95
Lewis & Clark	63	1	6	0	1	0	71	95
Dakota Prairie/Grassland*	NA	NA	NA	NA	NA	NA	NA	NA
<b>TOTAL</b>	<b>2112</b>	<b>253</b>	<b>183</b>	<b>63</b>	<b>139</b>	<b>59</b>	<b>2,809</b>	
<b>Adjusted Total</b>	<b>3,124 (84%)</b>		<b>330 (9%)</b>		<b>260 (7%)</b>		<b>3,714</b>	



- Barriers - Juvenile**
- Black-Indeterminate Non-protocol
  - Green-Passable
  - Grey-Indeterminate
  - Natural Channel Simulation
  - Orange-Barrier Non-protocol
  - Red-Barrier
  - Teal-Passable Non-protocol
  - Streams
- Ownership**
- BLM
  - USFWS
  - USFS
  - corps
  - NPS
  - tribal
  - state
  - PVT
  - water

## Resident - Juvenile Cutthroat Trout Passage Assessment for the Northern Region

